



US 20050269946A1

(19) **United States**

(12) **Patent Application Publication** (10) **Pub. No.: US 2005/0269946 A1**

Jeong et al.

(43) **Pub. Date:**

Dec. 8, 2005

(54) **ORGANIC LIGHT EMITTING DISPLAY DEVICE AND METHOD OF FABRICATING THE SAME**

Publication Classification

(51) **Int. Cl.⁷** **H05B 33/00**

(52) **U.S. Cl.** **313/504**

(76) **Inventors:** **Chang-Yong Jeong**, Suwon-si (KR);
Tae-Wook Kang, Seongnam-si (KR);
Chang-Soo Kim, Suwon-si (KR)

(57) **ABSTRACT**

An organic light emitting display device (OLED) and a method of fabricating the same, in which electric field influence between first and second electrodes is reduced in an edge region of a unit pixel. The OLED includes a substrate, and a thin film transistor (TFT) located on the substrate. A passivation layer is located on the TFT over substantially an entire surface of the substrate, and has a via hole for exposing source or drain electrode, and a groove. A first electrode on the passivation layer is in electrical contact with the exposed source or drain electrode through the via hole, and has an edge located in the groove. A pixel defining layer is located on the first electrode and has an opening for exposing a predetermined portion of the first electrode. An organic layer is in contact with the predetermined portion, and a second electrode is formed on the organic layer.

Correspondence Address:
CHRISTIE, PARKER & HALE, LLP
PO BOX 7068
PASADENA, CA 91109-7068 (US)

(21) **Appl. No.:** **11/131,963**

(22) **Filed:** **May 18, 2005**

(30) **Foreign Application Priority Data**

Jun. 3, 2004 (KR) 2004-40541

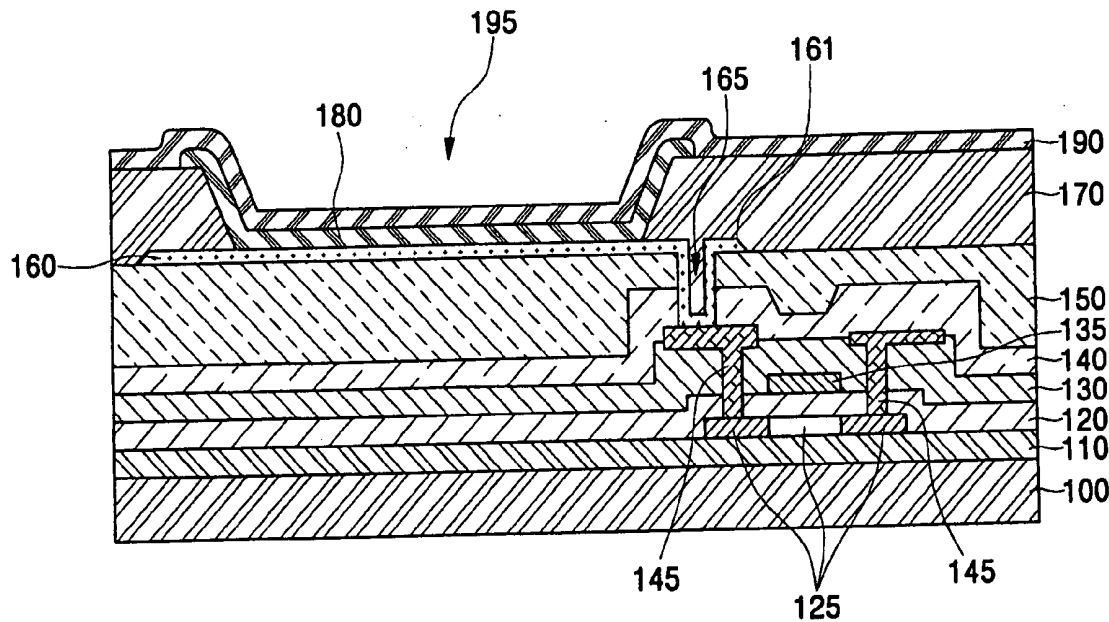


FIG. 1

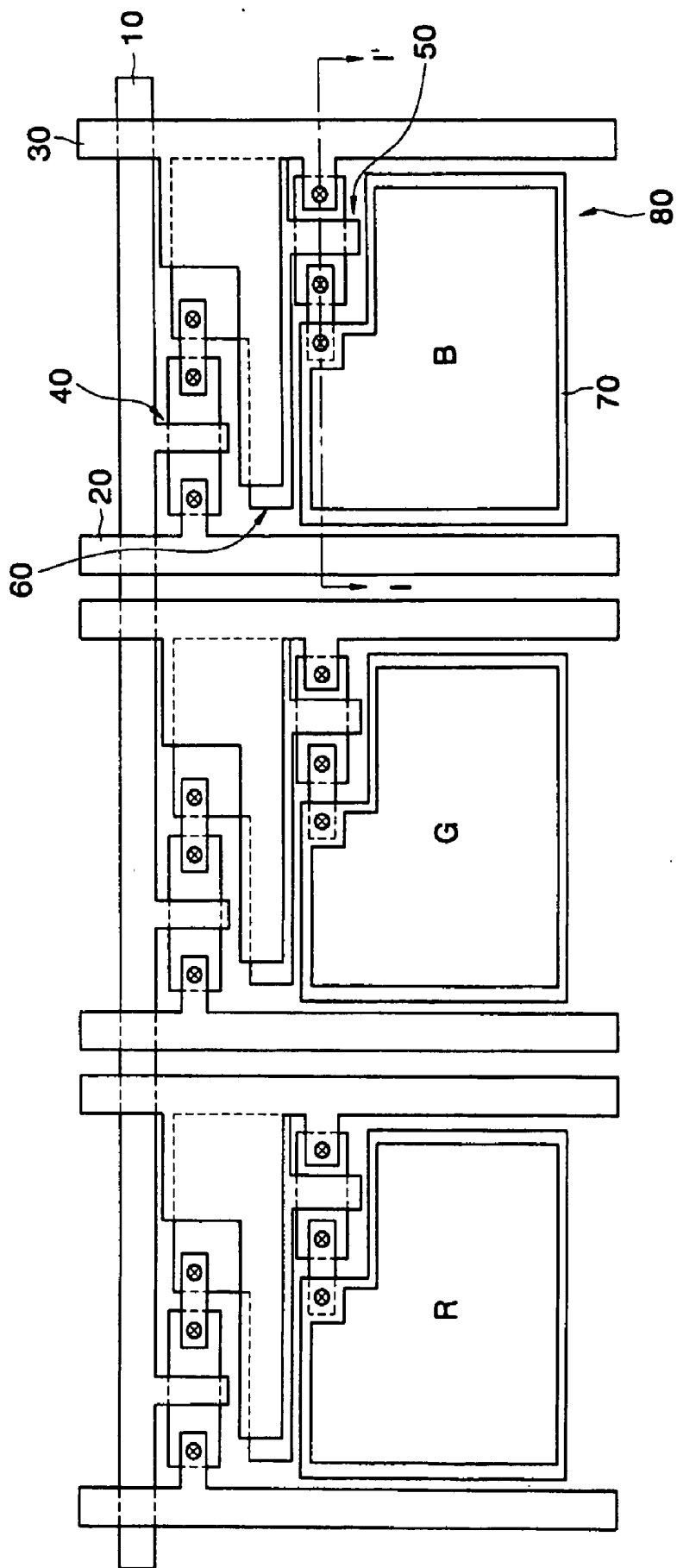


FIG. 2

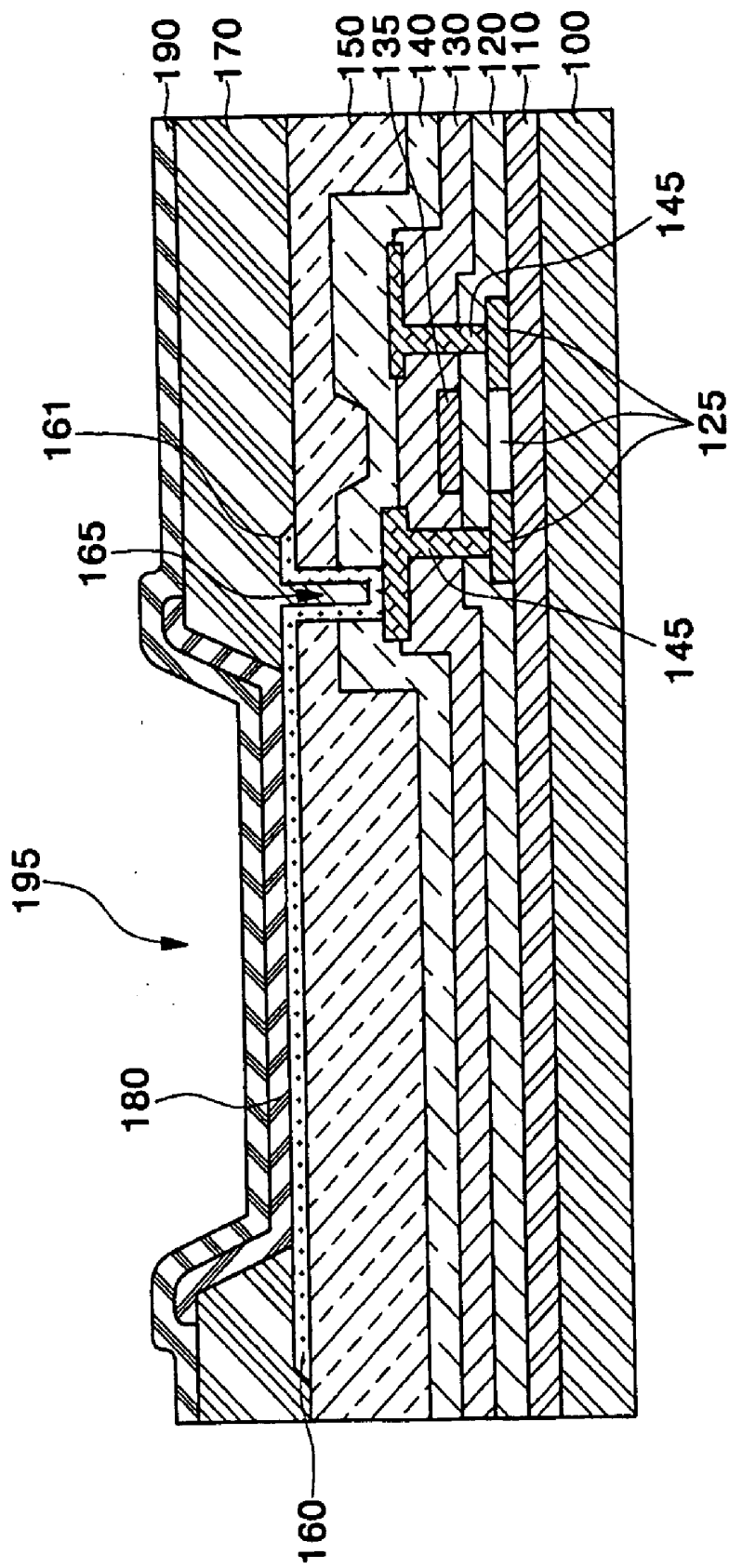


FIG. 3

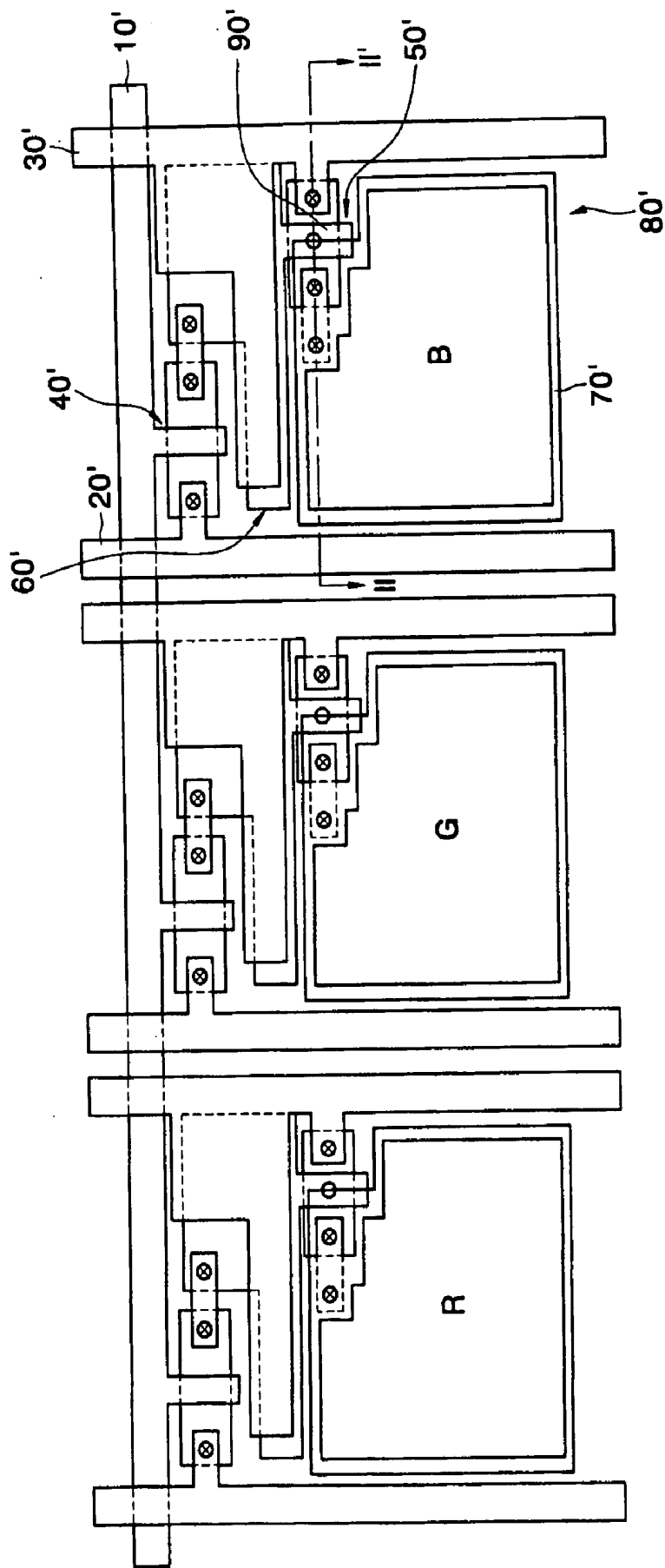


FIG. 4A

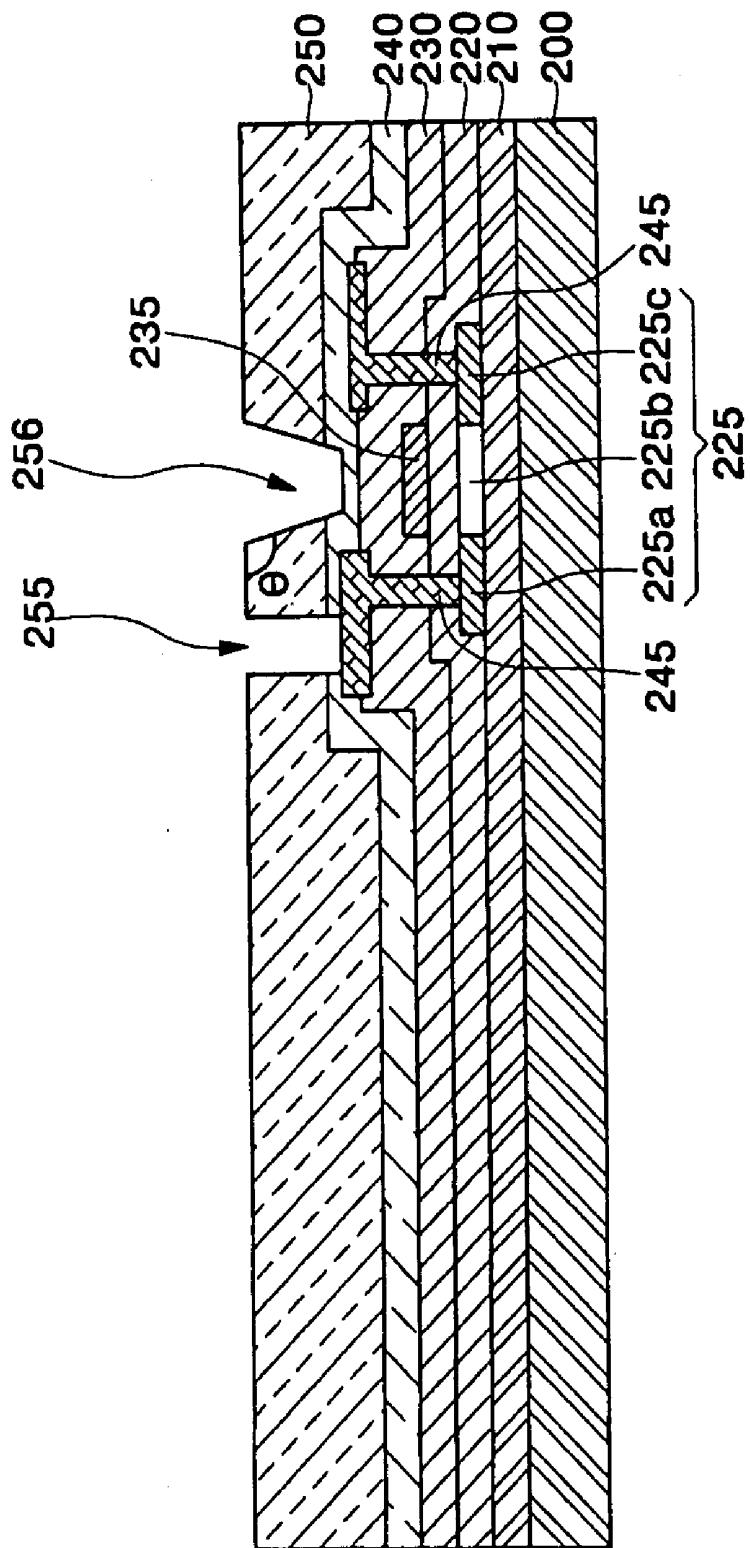


FIG. 4B

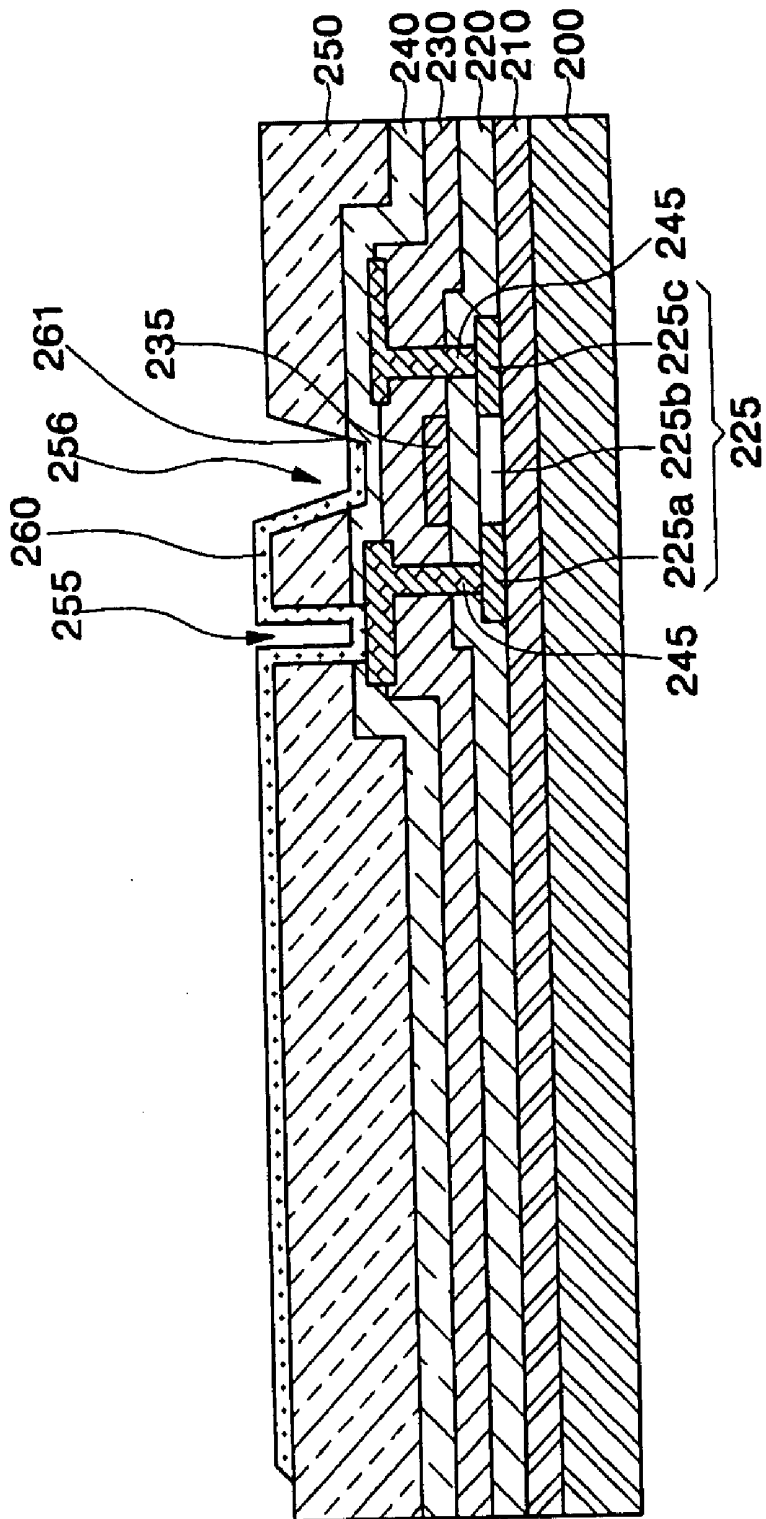
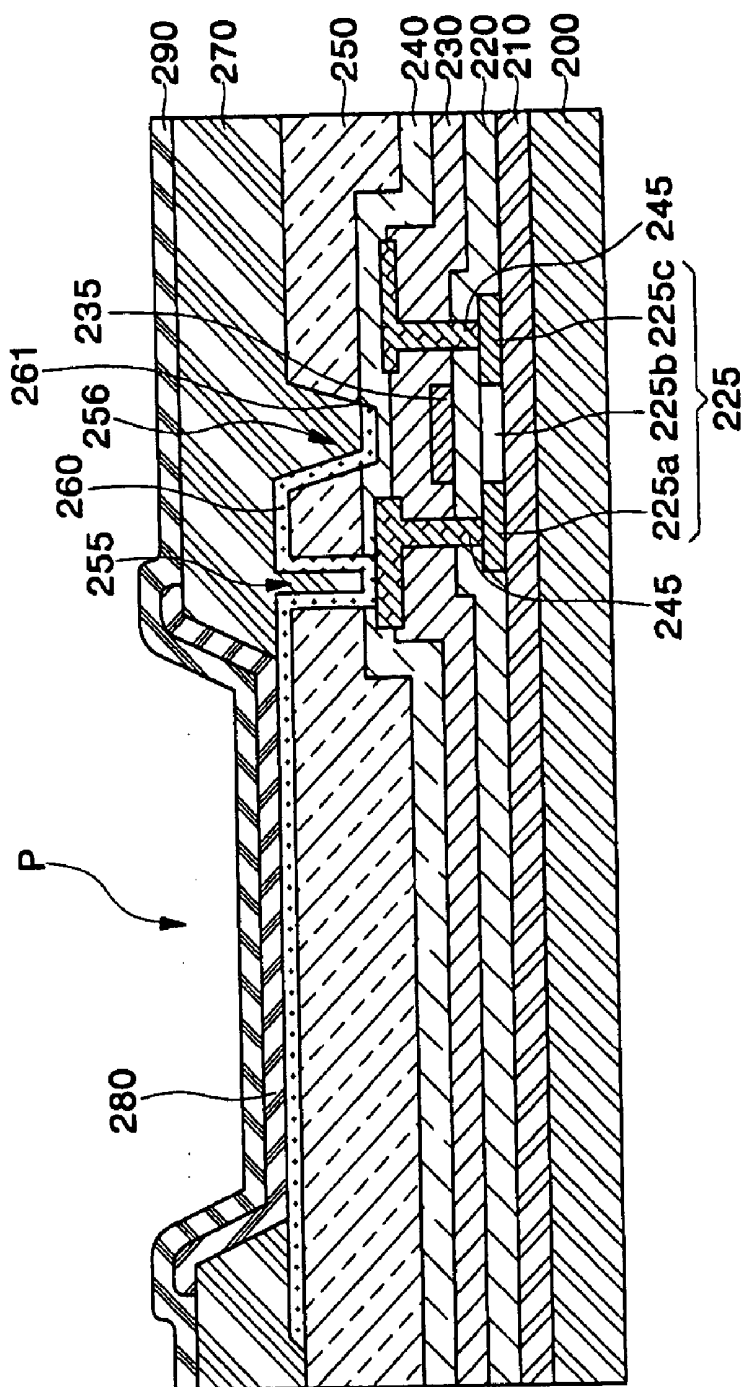


FIG. 4C



ORGANIC LIGHT EMITTING DISPLAY DEVICE AND METHOD OF FABRICATING THE SAME

CROSS-REFERENCE TO RELATED APPLICATION

[0001] This application claims priority to and the benefit of Korean Patent Application No. 10-2004-0040541, filed Jun. 3, 2004, the disclosure of which is incorporated herein by reference in its entirety.

BACKGROUND OF THE INVENTION

[0002] 1. Field of the Invention

[0003] The present invention relates to an organic light emitting display device and a method of fabricating the same and, more particularly, to an organic light emitting display device and a method of fabricating the same, which is capable of improving the degradation of unit pixel edges caused by an electric field between an anode and a cathode by increasing a gap between the anode and the cathode.

[0004] 2. Description of the Related Art

[0005] As a highly advanced information-oriented society has arrived, a consumer's demand for obtaining information rapidly and correctly in hand is increasing. In order to meet this demand, the development of various display devices which are thin and light to be easily carried and has a high information processing rate, has been accelerated. A conventional cathode ray tube (CRT) has problems of heavy weight, large volume and high power consumption, and a liquid crystal display device (LCD) has problems of complex processes, narrow viewing angles, and technical limitations on contrast ratio and a large-screen display. An organic light emitting display device (hereinafter, referred to as "OLED") capable of solving the problems is rapidly rising as the next generation display device.

[0006] Since the OLED is an emissive display device in which, when voltage is applied to an organic layer including an organic emission layer, electrons and holes are recombined in the emission layer to emit light, the OLED does not require a backlight unit unlike the LCD. As a result, the OLED has advantages of light weight and small thickness, simple processes, response speed nearly equal to the CRT, and low power consumption.

[0007] In general, the OLED is classified into a passive matrix type and an active matrix type depending on driving methods. The passive matrix OLED has advantages of simpler manufacturing processes since its display region is configured of simple matrix elements made of anodes and cathodes, however, its application is limited to low-resolution and small-sized displays due to problems of low resolution, high driving voltage, and lifetime reduction of the material. On the contrary, the active matrix OLED is advantageous to apply to high-resolution and large-sized displays since its display region includes thin film transistors in every pixel and uniform current is supplied to the respective pixels regardless of the number of the pixels of the OLED to thereby have stable brightness characteristics and reduced power consumption. For these reasons, the active matrix OLED is at the center of attention amongst the next generation display devices by virtue of its excellent performance and market potential.

[0008] This OLED is made of an organic layer including at least an emission layer between an anode and a cathode. The OLED may realize a full color display by depositing the emission layer with materials for representing three primary colors of red, green and blue, and then patterning them.

[0009] FIG. 1 is a plan view of a conventional OLED. A method of fabricating the conventional OLED will be described with reference to FIG. 1.

[0010] FIG. 1 is a plan view of the conventional OLED, one pixel of which includes red (R), green (G) and blue (B) unit pixels.

[0011] Referring to FIG. 1, a scan line 10 arranged in one direction, data lines 20 insulated from and crossing the scan line 10, and common power source-supply lines 30 insulated from and crossing the scan line 10, and arranged parallel to the data lines 20 are disposed in the pixel. A plurality of unit pixels, for example, the red (R), green (G) and blue (B) unit pixels are defined by the scan line 10, the data lines 20 and the common power source-supply lines 30.

[0012] Each unit pixel includes a switching thin film transistor (TFT) 40 for performing ON/OFF operation according to control of a signal applied through the scan line 10, a capacitor 60 for storing a data voltage applied to the switching TFT, a driving TFT 50 for supplying a current corresponding to the data voltage stored in the capacitor 60, and an organic light emitting diode 80 for performing emission operation in response to the current supplied from the driving TFT 50. The organic light emitting diode 80 includes a first electrode 70. The organic light emitting diode 80 is supplied through the driving TFT 50 with a driving current corresponding to the data voltage stored in the capacitor 60, and performs the emission operation corresponding to the supplied current.

[0013] FIG. 2 is a cross-sectional view taken along the line I-I' in FIG. 1, which shows one unit pixel of the OLED.

[0014] A method of fabricating the OLED will be described with reference to FIG. 2 as follows. First, a buffer layer 110 may be formed on an insulating substrate 100. The TFT, which includes a semiconductor layer 125, a gate insulating layer 120, a gate electrode 135, an interlayer insulating layer 130 and source and drain electrodes 145, is then formed on the buffer layer 110 using a conventional method.

[0015] A passivation layer 140 is formed on substantially the entire surface of the interlayer insulating layer 130, a planarization layer 150 is formed on the passivation layer 140, and then a via hole 165 exposing a predetermined portion of one electrode of the source and drain electrodes 145 is formed.

[0016] A first electrode 160 being in contact with the exposed predetermined portion of one of the source and drain electrodes 145 through the via hole 165 is formed.

[0017] After forming a pixel-defining layer 170 that covers the first electrode 160 having an indented shape due to the via hole 165, an opening 195 for exposing a portion of the first electrode 160 is formed on the pixel-defining layer 170.

[0018] Further, after forming an organic layer 180 including at least an emission layer in the opening 195 and in

contact with the first electrode **160** exposed in the opening **195**, a second electrode **190** is formed on substantially the entire surface of the substrate including the organic layer **180** in the opening **195**.

[**0019**] Since electric charges may readily be concentrated on an edge **161** of the first electrode, the influence of the electric field between the edge **161** of the first electrode and the second electrode may be maximized to apply excessive voltage to the organic layer, thereby accelerating deterioration of the organic layer. As a result, lifetime of the fabricated OLED may be reduced.

SUMMARY OF THE INVENTION

[**0020**] The present invention, therefore, solves aforementioned problems associated with conventional devices by providing an OLED and a method of fabricating the same which is capable of increasing lifetime through reduction or minimization of degradation of an organic layer by increasing a gap between an edge of a first electrode and a second electrode to reduce an electric field between the edge of the first electrode and the second electrode.

[**0021**] In exemplary embodiments of the present invention, an OLED and a method of fabricating the same, in which field influence between first and second electrodes is reduced in an edge region of a unit pixel, are provided.

[**0022**] In an exemplary embodiment according to the present invention, an organic light emitting display device (OLED) includes a substrate; a thin film transistor (TFT) located on the substrate, and having a semiconductor layer, a gate electrode, and source and drain electrodes on the substrate; and a passivation layer located on the TFT and over substantially an entire surface of the substrate, and having a via hole for exposing one electrode of the source and drain electrodes, and a groove. The OLED also includes a first electrode on the passivation layer, the first electrode being in electrical contact with the one electrode of the source and drain electrodes through the via hole, and having an edge located in the groove; and a pixel defining layer located on the first electrode and having an opening for exposing a predetermined portion of the first electrode. The OLED also includes an organic layer having at least one emission layer, a predetermined region of which is in contact with the predetermined portion of the first electrode; and a second electrode formed on the organic layer.

[**0023**] In another exemplary embodiment according to the present invention, a method of fabricating an OLED includes: forming a TFT having a semiconductor layer, a gate electrode, source and drain regions, and source and drain electrodes, on a substrate; forming a passivation layer on substantially an entire surface of the substrate having the TFT; forming a via hole for exposing one electrode of the source and drain electrodes and a groove formed by etching a portion of the passivation layer, on the passivation layer; forming a first electrode on the passivation layer, the first electrode being in electrical contact with one electrode of the source and drain electrodes through the via hole, and having an edge located in the groove; forming a pixel defining layer on substantially an entire surface of the substrate, the pixel defining layer having an opening for exposing a predetermined portion of the first electrode; forming an organic layer having at least an emission layer in the exposed opening of the pixel defining layer; and forming a second electrode on the organic layer.

[**0024**] The passivation layer may be made of a silicon oxide layer, a silicon nitride layer, a stacked layer of the silicon oxide layer and the silicon nitride layer, or the like. While the via hole for connecting one of the source and drain electrodes to the first electrode is formed on the passivation layer, the groove may be concurrently formed on a portion of the passivation layer to form an edge of the first electrode in the groove to thereby increase a gap between the edge of the first electrode and the second electrode, thereby reducing or minimizing influence of edge field due to reduction of electric field.

[**0025**] In addition, the OLED may further include a planarization layer for planarizing a step formed by the TFT on the passivation layer.

[**0026**] The planarization layer may be formed of one material selected from polyimide resin, polyamide resin, polyacryl resin, polyphenol resin, silicon-based resin or benzocyclobutene.

[**0027**] In this process, while forming the via hole for connecting one of the source and drain electrodes to the first electrode on the planarization layer and the passivation layer, the groove may be concurrently formed on the planarization layer and the passivation layer to form the edge of the first electrode in the groove.

[**0028**] As a result, the gap between the edge of the first electrode and the second electrode may be increased to reduce the electric field, thereby reducing or minimizing influence of edge field.

BRIEF DESCRIPTION OF THE DRAWINGS

[**0029**] The above and other features of the present invention will be described in reference to certain exemplary embodiments thereof with reference to the attached drawings in which:

[**0030**] **FIG. 1** is a plan view of a conventional OLED, one pixel of which includes red, green and blue unit pixels;

[**0031**] **FIG. 2** is a cross-sectional view taken along the line I-I' in **FIG. 1**, which shows a unit pixel of the OLED.

[**0032**] **FIG. 3** is a plan view of an OLED for explaining a method of fabricating the same in accordance with an exemplary embodiment of the present invention; and

[**0033**] **FIGS. 4A to 4C** are cross-sectional views of an OLED for explaining a method of fabricating the same in accordance with an exemplary embodiment of the present invention, wherein the cross-sectional views are taken during various different stages of fabrication, along the line II-II' in **FIG. 3**.

DETAILED DESCRIPTION

[**0034**] Hereinafter, an OLED and a method of fabricating the same in accordance with exemplary embodiments of the present invention will be described with reference to **FIGS. 3 and 4A to 4C**.

[**0035**] **FIG. 3** is a plan view of an OLED for explaining a method of fabricating the same in accordance with an exemplary embodiment of the present invention.

[**0036**] Similar to the conventional OLED of **FIG. 1**, a pixel in the OLED of **FIG. 3** includes a scan line **10'**, data

lines **20'** insulated from and crossing the scan line **10'**, and common power source-supply lines **30'** insulated from and crossing the scan line **10'**. The common power source-supply lines **30'** are arranged parallel to the data lines **20'**. The pixel includes R, G and B unit pixels, and each unit pixel includes a switching TFT **40'**, a driving TFT **50'**, a capacitor **60'**, an organic light emitting diode **80'** having a first electrode **70'**, in much the same way as in the conventional OLED of FIG. 1. However, as shown in FIG. 3, it may be appreciated that the first electrode **70'** is formed to extend to an upper portion of a gate electrode **90'**.

[0037] FIGS. 4A to 4C are cross-sectional views of an OLED for explaining a method of fabricating the same in accordance with an exemplary embodiment of the present invention, wherein the cross-sectional views are taken during various different stages of fabrication, along the line II-II' in FIG. 3.

[0038] Referring to FIG. 4A, a substrate **200** is provided, and in order to reduce or prevent diffusion of impurities from the substrate **200**, the OLED includes a buffer layer **210** made, for example, of one selected from a silicon oxide layer, a silicon nitride layer, and a stacked layer of the silicon oxide layer and the silicon nitride layer.

[0039] After applying an amorphous silicon layer on the buffer layer **210** and crystallizing the amorphous silicon layer, a polysilicon layer **225** is formed by patterning the crystallized silicon layer.

[0040] After forming a gate insulating layer **220** on substantially the entire surface of the substrate including the polysilicon layer **225**, a gate electrode **235** is deposited on a predetermined portion of the gate insulating layer **220**, i.e., a portion corresponding to a position at which a channel region **225b** is formed.

[0041] Then, the polysilicon layer **225** is ion doped to form a semiconductor layer **225** including a drain region **225a**, a source region **225c** and the channel region **225b**.

[0042] An interlayer insulating layer **230** is formed on substantially the entire surface of the gate insulating layer **220**, on which the gate electrode **235** was formed, and the gate insulating layer **220** and the interlayer insulating layer **230** are etched to form contact holes for exposing predetermined portions of the drain region **225a** and the source region **225c**.

[0043] Source and drain electrodes **245** are formed on the interlayer insulating layer **230** through contact holes to be connected to the source and drain regions **225c** and **225a**, respectively.

[0044] A passivation layer **240** for covering the source and drain electrodes **245** is formed on substantially the entire surface of the interlayer insulating layer **230**. In this process, the passivation layer **240** should be made of one selected from a silicon oxide layer, a silicon nitride layer, and a stacked layer of the silicon oxide layer and the silicon nitride layer.

[0045] By way of example, the passivation layer should be formed to a thickness of approximately 1000 Å (0.1 μm)–1 μm.

[0046] A via hole **255** for exposing one of the source and drain electrodes **245** is formed on the passivation layer **240**, and concurrently a groove **256** is formed on a portion of the passivation layer **240**.

[0047] In this process, the via hole **255** and the groove **256** are patterned using a halftone mask, and then formed by a plasma etching process.

[0048] The plasma etching process should be performed under a process pressure of approximately 5–300 mTorr by applying a plasma power of 500 W or more.

[0049] The plasma etching process should be performed using a mixed gas in which SF₆ or CF₄ gas having an amount that is one percent (1%) or more of the amount of O₂ in terms of volume, is mixed with O₂ gas.

[0050] The groove **256** should be etched to a depth of approximately 500–6000 Å (0.05–0.6 μm).

[0051] In addition, since a gate interconnection, etc., may be formed between the edge of the first electrode and the source electrode, the edge of the first electrode and the source electrode should be formed to have a gap of approximately 500 Å (0.05 μm)–4 μm.

[0052] Further, a planarization layer **250** for planarizing a step by the TFT may be additionally formed on the passivation layer **240**. In this case, the planarization layer **250** may substantially prevent the generation of diffused reflection due to the step formed by the TFT, as an organic layer is formed to have a small thickness in the following process.

[0053] In this case, the planarization layer **250** should be formed to a thickness of 5000 Å (0.5 μm)–2 μm.

[0054] By way of example, the planarization layer **250** may be formed of any suitable material, for example, one material selected from a group consisting of polyimide resin, polyamide resin, polyacryl resin, polyphenol resin, silicon-based resin and benzocyclobutene. In forming the planarization layer on the passivation layer, both processes of forming the via hole **255** for connecting one electrode of the source and drain electrodes **245** to the first electrode and of forming the groove **256** should be concurrently performed.

[0055] In this process, the via hole **255** and the groove **256** are patterned using a halftone mask, and then formed by a plasma etching process.

[0056] The plasma etching process should be performed under a process pressure of approximately 5–300 mTorr by applying a plasma power of 500 W or more.

[0057] The plasma etching process should be performed using a mixed gas in which one gas selected from SF₆, CF₄ and CHF₃ gases is mixed with O₂ gas. In the mixed gas, the amount of the O₂ gas should be one percent (1%) or more of the amount of the selected gas in terms of volume.

[0058] After the planarization layer **250** is completely etched, in order to etch the groove of the passivation layer **240**, the plasma etching process should be performed under a process pressure of approximately 5–300 mTorr by applying a plasma power of 500 W or more, and using a mixed gas in which SF₆ or CF₄ gas having an amount that is one percent (1%) or more of the amount of O₂ gas in terms of volume, is mixed with O₂ gas.

[0059] In addition, since the first electrode may be cut to cause an open circuit when the first electrode is formed in the groove, an upper taper angle Θ should be etched at an angle of 90° or more.

[0060] As shown in FIG. 4B, a first electrode 260 connected to one electrode of the source and drain electrodes 245 exposed by the via hole 255 is formed. An edge 261 of the first electrode 260 is located in the groove 256.

[0061] When the first electrode 260 is an anode, the first electrode 260 may be a transparent electrode made of ITO or IZO having a high work function, or a reflection electrode made of any suitable material, for example, one material selected from a group consisting of Pt, Au, Ir, Cr, Mg, Ag, Ni, Al and an alloy thereof.

[0062] In addition, when the first electrode 260 is a cathode, the first electrode 260 may be a thin transparent electrode or a thick reflection electrode made of any suitable material, for example, one material selected from a group consisting of Mg, Ca, Al, Ag, Ba and an alloy thereof having a low work function.

[0063] Then, as shown in FIG. 4C, a pixel defining layer 270 used as a pixel isolation layer is deposited and patterned on substantially the entire surface of the substrate at which the first electrode 260 is formed, to form an opening P for exposing a predetermined portion of the pixel electrode.

[0064] The pixel defining layer 270 should be formed of any suitable material, for example, one material selected from a group consisting of acryl-based resin, benzocyclobutene (BCB) and polyimid (PI).

[0065] Next, an organic layer 280 including at least an emission layer is formed in the opening P and on the first electrode 260 exposed in the opening P.

[0066] The organic layer 280 may further include at least one selected from a hole injection layer, a hole transport layer, a hole blocking layer, an electron transport layer, and an electron injection layer.

[0067] A second electrode 290 is formed on the organic layer 280.

[0068] When the second electrode 290 is a cathode, the second electrode 290 is formed on the organic layer 280 and formed of a thin transparent electrode or a thick reflection electrode made of any suitable material, for example, one conductive metal selected from a group consisting of Mg, Ca, Al, Ag, Ba and an alloy thereof having a work function lower than the first electrode.

[0069] In addition, when the second electrode 290 is an anode, the second electrode may be a transparent electrode made of ITO or IZO having a work function higher than the first electrode or a reflection electrode made of any suitable material, for example, one material selected from a group consisting of Pt, Au, Ir, Cr, Mg, Ag, Ni, Al and an alloy thereof.

[0070] As a result, the gap between the edge of the first electrode, at which an electric field may be readily concentrated, and the second electrode may be increased to reduce the electric field, thereby reducing or minimizing degradation of the organic material and increasing the lifetime of the OLED.

[0071] As can be seen from the foregoing, in accordance with the present invention, in the edge region of the unit pixel, the gap between the edge of the first electrode and the second electrode is increased to reduce the electric field between the first and second electrodes so that it is possible

to reduce or minimize the degradation in the edge of the unit pixel, thereby increasing the lifetime of the OLED.

[0072] Although the present invention has been described with reference to certain exemplary embodiments thereof, it will be understood by those skilled in the art that a variety of modifications and variations may be made to the present invention without departing from the spirit or scope of the present invention defined in the appended claims, and their equivalents.

What is claimed is:

1. An organic light emitting display device (OLED) comprising:

a substrate;

a thin film transistor (TFT) located on the substrate, and having a semiconductor layer, a gate electrode, and source and drain electrodes on the substrate;

a passivation layer located on the TFT and over substantially an entire surface of the substrate, and having a via hole for exposing one electrode of the source and drain electrodes, and a groove;

a first electrode on the passivation layer, the first electrode being in electrical contact with the one electrode of the source and drain electrodes through the via hole, and having an edge located in the groove;

a pixel defining layer located on the first electrode and having an opening for exposing a predetermined portion of the first electrode;

an organic layer having at least one emission layer, a predetermined region of which is in contact with the predetermined portion of the first electrode; and

a second electrode formed on the organic layer.

2. The device according to claim 1, wherein the passivation layer is made of one selected from a silicon oxide layer, a silicon nitride layer, and a stacked layer of the silicon oxide layer and the silicon nitride layer.

3. The device according to claim 1, wherein the passivation layer is formed to a thickness of approximately $0.1\ \mu\text{m}$ ~ $1\ \mu\text{m}$.

4. The device according to claim 1, wherein the groove is etched to a depth of approximately $0.05\ \mu\text{m}$ ~ $0.6\ \mu\text{m}$.

5. The device according to claim 1, further comprising a planarization layer on the passivation layer.

6. The device according to claim 5, wherein the planarization layer is formed of one material selected from a group consisting of polyimid resin, polyamide resin, polyacryl resin, polyphenol resin, silicon-based resin and benzocyclobutene.

7. The device according to claim 5, wherein the planarization layer is formed to a thickness of approximately $0.5\ \mu\text{m}$ ~ $2\ \mu\text{m}$.

8. The device according to claim 1, wherein the first electrode comprises an anode or a cathode.

9. The device according to claim 1, wherein a distance between the edge of the first electrode and the source electrode is approximately $0.5\ \mu\text{m}$ ~ $4\ \mu\text{m}$.

10. The device according to claim 1, wherein the organic layer further includes at least one selected from a group consisting of a hole injection layer, a hole transport layer, a hole blocking layer, an electron transport layer, and an electron injection layer.

11. A method of fabricating an organic light emitting display device (OLED), comprising:

forming a thin film transistor (TFT) having a semiconductor layer, a gate electrode, source and drain regions, and source and drain electrodes, on a substrate;

forming a passivation layer over substantially an entire surface of the substrate having the TFT;

forming a via hole for exposing one electrode of the source and drain electrodes and a groove formed by etching a portion of the passivation layer, on the passivation layer;

forming a first electrode on the passivation layer, the first electrode being in electrical contact with one electrode of the source and drain electrodes through the via hole, and having an edge located in the groove;

forming a pixel defining layer on substantially an entire surface of the substrate, the pixel defining layer having an opening for exposing a predetermined portion of the first electrode;

forming an organic layer having at least an emission layer in the exposed opening of the pixel defining layer; and

forming a second electrode on the organic layer.

12. The method according to claim 11, wherein the passivation layer is made of one selected from a silicon oxide layer, a silicon nitride layer, and a stacked layer of the silicon oxide layer and the silicon nitride layer.

13. The method according to claim 11, wherein the passivation layer is formed to a thickness of approximately $0.1\ \mu\text{m}\sim 1\ \mu\text{m}$.

14. The method according to claim 11, wherein the groove is etched to a depth of approximately $0.05\ \mu\text{m}\sim 0.6\ \mu\text{m}$.

15. The method according to claim 11, wherein the groove and the via hole are concurrently formed using a halftone mask process.

16. The method according to claim 11, wherein the groove is formed under a process pressure of approximately 5~300 mTorr using a mixed gas in which an SF_6 or CF_4 gas having an amount which is at least one percent (1%) of an amount of an O_2 gas in terms of volume, is mixed with the O_2 gas

17. The method according to claim 11, wherein the OLED further includes a planarization layer on the passivation layer.

18. The method according to claim 17, wherein the planarization layer is formed of one material selected from a group consisting of polyimide resin, polyamide resin, polyacryl resin, polyphenol resin, silicon-based resin and benzocyclobutene

19. The method according to claim 17, wherein the planarization layer is formed to a thickness of approximately $0.5\ \mu\text{m}\sim 2\ \mu\text{m}$.

20. The method according to claim 17, wherein the groove is formed under a process pressure of approximately 5~300 mTorr by applying a plasma power of at least 500 W, and using a mixed gas in which one gas selected from SF_6 , CF_4 and CHF_3 gases is mixed with an O_2 gas having an amount that is at least one percent (1 %) of an amount of the selected gas in terms of volume.

21. The method according to claim 11, wherein the first electrode comprises an anode or a cathode.

22. The method according to claim 11, wherein a distance between the edge of the first electrode and the source electrode is approximately $0.05\ \mu\text{m}\sim 4\ \mu\text{m}$.

23. The method according to claim 11, wherein the organic layer further includes at least one selected from a group consisting of a hole injection layer, a hole transport layer, a hole blocking layer, an electron transport layer, and an electron injection layer.

* * * * *

专利名称(译)	有机发光显示装置及其制造方法		
公开(公告)号	US20050269946A1	公开(公告)日	2005-12-08
申请号	US11/131963	申请日	2005-05-18
[标]申请(专利权)人(译)	JEONG常勇 姜泰旭 金昌洙		
申请(专利权)人(译)	JEONG长永 KANG TAE旭 金昌洙		
当前申请(专利权)人(译)	三星DISPLAY CO. , LTD.		
[标]发明人	JEONG CHANG YONG KANG TAE WOOK KIM CHANG SOO		
发明人	JEONG, CHANG-YONG KANG, TAE-WOOK KIM, CHANG-SOO		
IPC分类号	H05B33/00 H01L51/52 H05B33/22		
CPC分类号	H01L51/5206 H01L51/5203 H01L27/3258 H01L27/3246 H01L51/5209		
优先权	1020040040541 2004-06-03 KR		
其他公开文献	US7402944		
外部链接	Espacenet USPTO		

摘要(译)

有机发光显示装置 (OLED) 及其制造方法，其中在单位像素的边缘区域中减小第一和第二电极之间的电场影响。 OLED包括衬底和位于衬底上的薄膜晶体管 (TFT)。钝化层基本上在基板的整个表面上位于TFT上，并且具有用于暴露源电极或漏电极的通孔，以及凹槽。钝化层上的第一电极通过通孔与暴露的源极或漏极电接触，并且具有位于凹槽中的边缘。像素限定层位于第一电极上并具有用于暴露第一电极的预定部分的开口。有机层与预定部分接触，第二电极形成在有机层上。

